

# ARCHITECTURAL DIGEST

THE INTERNATIONAL DESIGN AUTHORITY

APRIL 2013

## Great Style

### DESIGNERS AT HOME

**Expert Ideas  
and Inspiration**

from Jamie Drake,  
Anouska Hempel,  
Waldo Fernandez,  
and More

**PLUS**

Renovation Essentials  
The Best of Charleston



# COLONIAL REVIVAL

After falling for the beauty and laid-back lifestyle of San Miguel de Allende, designers Andrew Fisher and Jeffrey Weisman establish their own getaway in the Mexican city, recasting an 18th-century industrial space as a luxurious compound for indoor-outdoor living

TEXT BY PETER HALDEMAN PHOTOGRAPHY BY SIMON WATSON PRODUCED BY HOWARD CHRISTIAN



**Above:** San Francisco-based interior designers Andrew Fisher (left) and Jeffrey Weisman, of the firm Fisher Weisman, at Casa Acanto, their retreat in San Miguel de Allende, Mexico. **Opposite:** The former tannery, built in the 18th century, opens onto multiple terraces as well as a *sala abierta*, or outdoor living room. For details see Sources.

**T**he narrow cobblestone streets, Baroque churches, and bougainvillea-draped colonial homes of San Miguel de Allende, in central Mexico, have long beckoned artistic souls from north of the border. The city's Escuela de Bellas Artes, founded in 1938, still attracts an international student body, and Americans—represented by a mix of designers, entrepreneurs, and other creative types, both working and retired—now make up about 10 percent of San Miguel's population. For many, the mountain town casts an instantaneous spell. "My sister came here to play in a bridge tournament," recounts Jeffrey Weisman, who, with his personal and professional partner, Andrew Fisher, manages the San Francisco-based interior design firm Fisher Weisman. (Their first book, *Artful Decoration*, was just released by the Monacelli Press.) "When she came back she said, 'I know where you're going to move.' We went down for a vacation and ended up buying a house."

Located in the city's historic center ("three doors down from the bullring," notes Weisman), the couple's home, like most in San Miguel, has a reserved public face—a terra-cotta-color stucco wall punctuated by iron-grated windows—that scarcely hints at the architectural riches inside. But unlike most residences in the area, which are U-shaped with a courtyard in the middle, theirs is laid out in an L. "It was originally built as a tannery," Weisman explains. "The houses with courtyards tend to be a bit dark and claustrophobic, but ours has views and light and gardens with three old jacarandas." For all that, the 18th-century property lacked a certain charm: The structure had been remodeled and added onto over the years, and had most recently served as a sales office for a hotel chain.

"Basically we wanted to warm it up and give it an authentic 18th-century feel," Fisher says. To that end, he and Weisman hired a crew of several dozen local workers to gut and reconstruct the place. In went hand-hewn pine beams as well as terra-cotta floor tiles that had been given a handsome patina with gasoline







In the living room, pine beams highlight the ceiling, and the French doors feature curtains of a Duralée velvet trimmed with an ikat by Kravet. The mesquite bookshelves were custom made, the Fisher Weisman-designed daybed and sofa are upholstered in a Gretchen Bellinger linen velvet, and the antique Moroccan rugs were purchased in Marrakech.



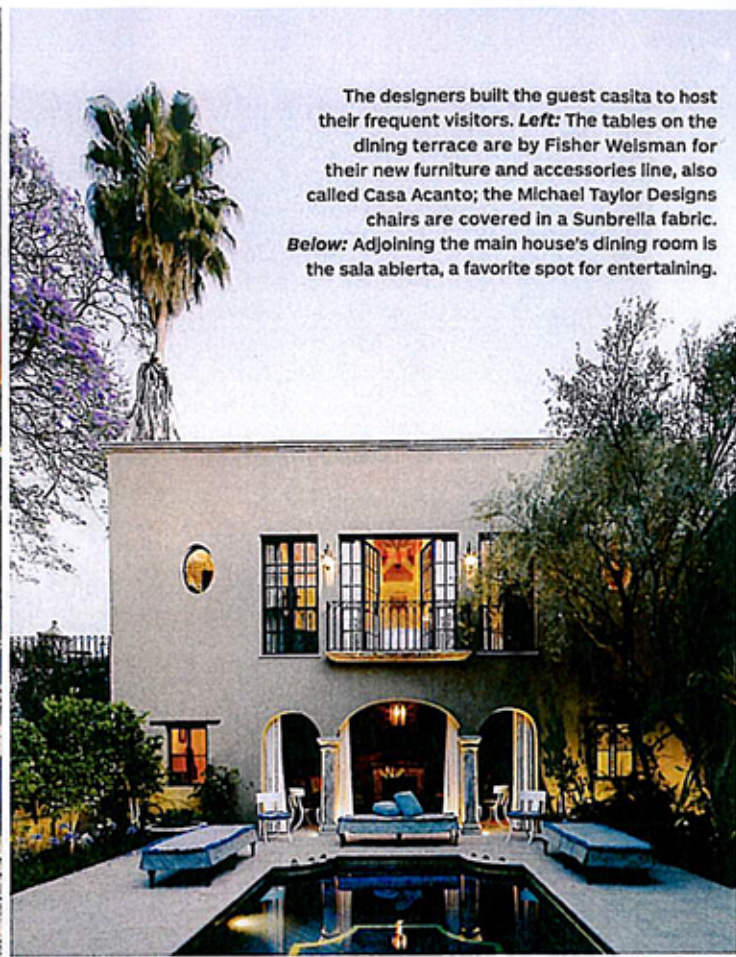


*Opposite, clockwise from top left:* The couple devised the kitchen's frieze as well as the mesquite-and-sabino-wood island, whose bronze legs were sculpted by Fisher. A watercolor by Fisher hangs over the fireplace in the breakfast room; the chairs are covered in a Rose Cumming linen. The kitchen cabinets are sabino and reclaimed pine, and the hood over the Viking range is fronted by a sabino-framed mirror.

*Above:* Fisher designed the dining room's light fixture, fashioned of seashells, green glass, and mother-of-pearl, and he also made the gold-leafed paintings; both the table, which has a walnut top and a hand-carved mahogany base, and the chairs are by Fisher Weisman for Michael Taylor Designs. The floor tiles were hand-rubbed with gasoline and tar to create a patina.



The designers built the guest casita to host their frequent visitors. *Left:* The tables on the dining terrace are by Fisher Weisman for their new furniture and accessories line, also called Casa Acanto; the Michael Taylor Designs chairs are covered in a Sunbrella fabric. *Below:* Adjoining the main house's dining room is the sala abierta, a favorite spot for entertaining.



and tar. Fireplaces were finished with elaborately carved cantera-stone mantels, and new windows and French doors opened up the house to the terraced gardens. Along the way, the designers also added a bedroom and bath in the main house and built a guest casita in the rear garden.

The couple christened their home Casa Acanto, acanthus leaves being a design motif they used throughout. Fronted by tall wood-plank doors, the entry hall has a new cross-vaulted ceiling—its stone cornices engraved with an acanthus pattern—that soars above 17th-century stone pavers warmed by an antique Moroccan rug. On one side of the entry is the dining room, outfitted with a huge shell-encrusted light fixture designed by Fisher, an echo of his days as a protégé of Tony Duquette. On the other side sits the kitchen, with a blue-and-white frieze and cabinets made of reclaimed pine. But the main attraction lies further ahead. Steel-and-glass doors open onto a terrace and a *sala abierta*, or outdoor living room, that looks like it dates from the conquistador era: The cozy spot is framed by stone arches and anchored by a fireplace with an Argentine grill where the couple roasts meats and vegetables for an apparently endless stream of guests.

For the interior spaces, Fisher and Weisman decided that a clean backdrop best served both the colonial-style architecture and their shared taste in furnishings, which Weisman neatly sums up as “a blend of the classical and the whimsical.” Deep reddish-brown tiles and beams, white walls, and a simple blue-and-white color scheme set off a spirited mingling of traditional, modern, and custom-made pieces. The living room is appointed with a pair of 1940s James Mont lamps, and daybeds and curtains embellished with ikat. In front of the sofa stand taborets the designers upholstered in an Indian silk-and-peacock-feather fabric and topped with disks of California-laurel wood. The room is enlivened by Fisher’s artworks, including one of his monumental “quilts” made of painted coffee filters and a mixed-media piece assembled from fragments of tarp and gold leaf, the latter used to conceal a large television over the fireplace. “We really live outside when we’re here,” he says. “But this is our indoor hangout. We do yoga and have Spanish classes here.”

The living room’s wrought-iron balconies survey the lower gardens, where grackles and finches bathe in a massive freestanding fountain chiseled from a single piece of cantera and six bronze frogs spout water into the cobalt-tiled swimming pool. Overlooking the pool, the new guest casita has its own *sala abierta*, as well as a bedroom suite on each of its two floors and a roof terrace boasting glorious views of the tile domes and flamboyant sunsets of the storied town. “The casita is very popular,” Weisman says. “We love to have company.” As if on cue, the designer’s phone chimes and he excuses himself to welcome another group of friends to Casa Acanto. □

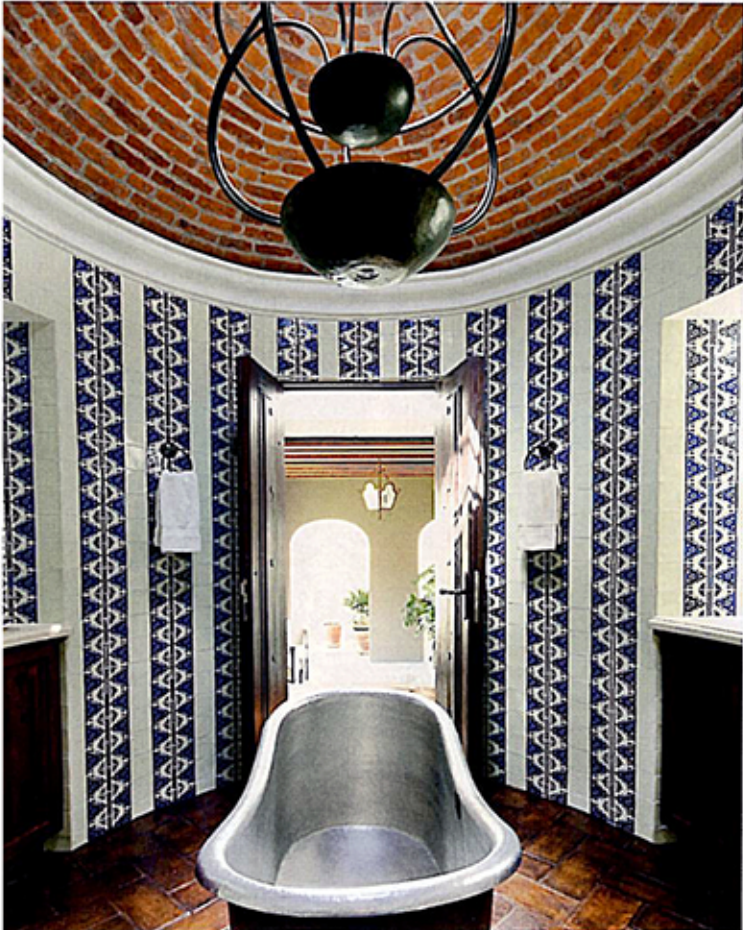


**Right, from top:** The roof terrace of the guest casita provides stunning views of the town and its surroundings; the teak sofa and chairs are by Michael Taylor Designs, with cushions covered in a Sunbrella fabric. The *sala abierta*'s marble table, conceived by Fisher Weisman and hand-carved in India, is grouped with sofas the duo created for Michael Taylor Designs, with cushions clad in a Duralee fabric.



**Above:** Fisher designed the office's desk and embellished the Queen Anne chair with shells and black paint. **Opposite, clockwise from top left:** In a guest room, the house's blue-and-white motif continues with curtains made of a Kravet fabric and, on the adjacent wall, two antique ceiling panels from a Japanese temple. The tile in a guest bath was

produced in the nearby city of Dolores Hidalgo. The master bath's pendant lights are by Jonathan Browning Studios, and the sink fittings are a custom design by Fisher Weisman. The pair created the room's tiered copper light fixture, which also serves as a tub filler for the copper bath, crafted by a Mexican artisan.







A watercolor by Fisher is mounted over the master bedroom's mantel, which is flanked by, from top, a pair of the designer's pencil drawings of seashells, two of his gilded tapestries, and a set of antique embroidery panels. The Fisher Weisman-designed door is made of reclaimed pine beams connected with steel studs; the bed is dressed in Frette linens, and the bedside lamp is a 19th-century Italian piece that once resided at Hearst Castle.

# SOURCES

Items pictured but not listed are from private collections or are not sourceable. Items similar to vintage and antique pieces shown are often available from the dealers listed.

For a more detailed version of Sources go to [archdigest.com/sources/apr13](http://archdigest.com/sources/apr13).

(T) means item available only to the trade.

## ART SCENE: RICHARD MISRACH

PAGE 74

Richard Misrach is represented by Pace/MacGill Gallery in New York; [pacemacgill.com](http://pacemacgill.com); Fraenkel Gallery in San Francisco; [fraenkelgallery.com](http://fraenkelgallery.com); and Marc Selwyn Fine Art in Los Angeles; [marcselwynfineart.com](http://marcselwynfineart.com).

## HISTORIC PROPORTIONS

PAGES 116-27

Interior design by Anouska Hempel Design; [anouskahempeldesign.com](http://anouskahempeldesign.com).  
Sitting room: Blake lantern by Anouska Hempel for Charles Edwards; [charlesedwards.com](http://charlesedwards.com).  
Master bedroom: Curtains and bed canopy of customized Jimmy Stripo III silk by J. Robert Scott (T); [jrobertscott.com](http://jrobertscott.com).  
Oriental Room bath: On tiles, decorative painting by Kaffe Fassett; [kaffe Fassett.com](http://kaffe Fassett.com).

## A GIMLET EYE

PAGES 128-37

Interior design by Waldo's Designs; [waldosdesigns.com](http://waldosdesigns.com).  
Living room: Piano by Yamaha; [yamaha.com](http://yamaha.com).  
Kitchen: B3 cabinetry by Bulthaup; [bulthaup.com](http://bulthaup.com). Cooktop by Gaggenau; [gaggenau.com](http://gaggenau.com). Ovens by Miele; [mieleusa.com](http://mieleusa.com). Refrigerator by Sub-Zero; [subzero-wolf.com](http://subzero-wolf.com). On bar stools, Diablo leather by Moore & Giles Inc. (T); [mooreandgiles.com](http://mooreandgiles.com).  
Dining room: On chairs, Silk & Sexy mohair by Great Plains (T); [hollyhunt.com](http://hollyhunt.com).  
Master bedroom: Italian Hotel Satin Stitch White bed linens by Restoration Hardware; [restorationhardware.com](http://restorationhardware.com). Curtains of Cashmere fabric by Rogers & Goffigon (T); 212-888-3242.  
Bedroom: Rocobar blanket by Hermès; [hermes.com](http://hermes.com).  
Master bath: Tea-for-Two tub by Kohler; [kohler.com](http://kohler.com).

## SOCIAL ENGINEERING

PAGES 138-45

Interior design by Drake Design Assoc.; [drakedesignassociates.com](http://drakedesignassociates.com). Beds custom made by Charles H. Beckley Inc. (T); [chbeckley.com](http://chbeckley.com).  
Private garage: Oval Cumulus light fixture by Ted Abramczyk for Ralph Pucci International (T); [ralphpucci.net](http://ralphpucci.net).  
Living room: On lounge chair, Ritz mohair by Christopher Hyland Inc. (T); [christopherhyland.net](http://christopherhyland.net). On sofa, Not Square silk blend by Jamie Drake for F. Schumacher & Co. (T); [fschumacher.com](http://fschumacher.com). Madame X ottoman from the Bright Group; [thebrightgroup.com](http://thebrightgroup.com). On ottoman and club chairs, Disco velvet by Rubelli (T); [donghia.com](http://donghia.com). Curtains of Gabardine Della Lana lamb's-wool satin by Clarence House (T); [clarencehouse.com](http://clarencehouse.com). On walls, Sidewalk Gray chair by Benjamin

Moore; [benjaminmoore.com](http://benjaminmoore.com); with Venetian-plaster finish by the Alpha Workshops (T); [alphaworkshops.org](http://alphaworkshops.org). Haldis I rug by Edward Fields (T); [edwardfields.com](http://edwardfields.com).  
Living room sitting area: On sofa, Milton viscose blend by Sahco (T); [donghia.com](http://donghia.com). Eden Roc floor lamps by the Alpha Workshops (T); [alphaworkshops.org](http://alphaworkshops.org). Andromeda ceiling fixture by Artemide; [artemide.us](http://artemide.us). On low chair, Turner silk pile by Sabina Fay Braxton (T); [sabinafaybraxton.com](http://sabinafaybraxton.com).  
Kitchen: Maria counter stools from the Bright Group; [thebrightgroup.com](http://thebrightgroup.com); in Athene leather by Cortina Leathers Inc. (T); [cortinaleathers.com](http://cortinaleathers.com).  
Master bedroom: On walls, Soot paint by Benjamin Moore; [benjaminmoore.com](http://benjaminmoore.com). Lamps by Cedric Hartman (T); [cedrichartman.com](http://cedrichartman.com). Garda bed linens by E. Braun & Co.; [ebraunandco.com](http://ebraunandco.com). Terra I carpet by Edward Fields (T); [edwardfields.com](http://edwardfields.com).  
Guest room: Manila Hemp wall covering by Phillip Jeffries Ltd. (T); [phillipjefries.com](http://phillipjefries.com). Coverlet of Medlo silk-linen and throw pillows of Semiramis silk by Sahco (T); [donghia.com](http://donghia.com). Pillows of Surlin silk by Jim Thompson (T); [jimthompsonfabrics.com](http://jimthompsonfabrics.com).  
Master bath: On walls, Perky Peach paint by Benjamin Moore; [benjaminmoore.com](http://benjaminmoore.com); with Venetian-plaster finish by the Alpha Workshops (T); [alphaworkshops.org](http://alphaworkshops.org). Minimal fittings by Boffi; [boffi.com](http://boffi.com). Towels by Ralph Lauren Home; [ralphlaurenhome.com](http://ralphlaurenhome.com).

## OCEAN BREEZE

PAGES 146-51

Interior design and architecture by Kallos Turin; [kallosturin.com](http://kallosturin.com). Landscape design consultation by Marmol Radziner; [marmol-radziner.com](http://marmol-radziner.com).  
Living room: Andy sofas by B&B Italia; [bebitalia.it](http://bebitalia.it). Gong tables by Cappellini; [cappellini.it](http://cappellini.it). Spun Light F floor lamp by Flos; [flosusa.com](http://flosusa.com). Throw by Hermès; [hermes.com](http://hermes.com). On walls, Chantilly Lace paint by Benjamin Moore; [benjaminmoore.com](http://benjaminmoore.com).  
Kitchen: Verner Pantone Junior chairs by Vitra; [vitra.com](http://vitra.com). Range by Viking; [vikingrange.com](http://vikingrange.com). Eero Saarinen Tulip chairs and side table by Knoll; [knoll.com](http://knoll.com).  
Dining room: Eames Aluminum Group chairs by Herman Miller; [hermanmiller.com](http://hermanmiller.com). Atoth table by B&B Italia; [bebitalia.it](http://bebitalia.it).  
Master suite: Charles bed and Metro-politan lounge chair and ottoman all by B&B Italia; [bebitalia.it](http://bebitalia.it). Fjord pouf and Oslo side table by Moroso; [moroso.it](http://moroso.it). Vintage-Washed Jersey bed linens by Restoration Hardware; [restorationhardware.com](http://restorationhardware.com).  
Master bath: Vanity of Corian by DuPont; [dupont.com](http://dupont.com). Noriko mat and Jazz towels by Missoni Home; [missionihome.com](http://missionihome.com). 111 sink fittings by Vola; [vola.com](http://vola.com). Cube tub by Wetstyle; [wetstyle.ca](http://wetstyle.ca).  
Guest bath: Tosca mosaic floor tile by Bisazza; [bisazza.com](http://bisazza.com).  
Terrace: Frame lounge chairs and Play poufs by Paola Lenti; [paolalenti.it](http://paolalenti.it). Poolside terrace: Osorom stool by Moroso; [moroso.it](http://moroso.it). 1966 Collection seating by Richard Schultz; [knoll.com](http://knoll.com). Paseo umbrella by Santa Barbara Designs; [sbumbrella.com](http://sbumbrella.com).

## MIX MASTER

PAGES 152-59

Interior design by David Jimenez; [djimenez.com](http://djimenez.com).  
Doorway: Curtains of Textured Belgian linen by Restoration Hardware; [restorationhardware.com](http://restorationhardware.com); with Greek Key Jacquard trim from M&J Trimming; [mjtrim.com](http://mjtrim.com).  
Living room: Gilded Wood Open-Work screen by Arteriors; [arteriorshome.com](http://arteriorshome.com). Gold Suzani pillows by Jayson Home; [jaysonhome.com](http://jaysonhome.com).  
Library: Presidio daybed by Williams-Sonoma Home; [williams-sonoma.com](http://williams-sonoma.com). Rowan Pharmacy Task floor lamp by Restoration Hardware; [restorationhardware.com](http://restorationhardware.com). On walls, Chocolate paint by Restoration Hardware. English Chesterfield sofa by Ralph Lauren Home; [ralphlaurenhome.com](http://ralphlaurenhome.com).  
Kitchen: Custom cabinetry and Bistro hardware by Restoration Hardware; [restorationhardware.com](http://restorationhardware.com). Arched Top lantern by Williams-Sonoma Home; [williams-sonoma.com](http://williams-sonoma.com). Minta sink fittings by Grohe; [grohe.com](http://grohe.com).  
Dining room: French Urn Pedestal dining table by Restoration Hardware; [restorationhardware.com](http://restorationhardware.com).  
Music closet: Japanese Paper Weave wall covering by Phillip Jeffries Ltd. (T); [phillipjefries.com](http://phillipjefries.com).  
Dressing room: Greek Key rug by Jonathan Adler; [jonathanadler.com](http://jonathanadler.com).  
Master bedroom: Blown Glass chandelier by Williams-Sonoma Home; [williams-sonoma.com](http://williams-sonoma.com). Blanket of Ballines herringbone wool by Ralph Lauren Home; [ralphlaurenhome.com](http://ralphlaurenhome.com). Curtains of Vintage Velvet cotton by Restoration Hardware; [restorationhardware.com](http://restorationhardware.com).  
Master bath: Dillon shower fittings, Square Wall-Mount Rain showerhead, and Turkish towels by Restoration Hardware; [restorationhardware.com](http://restorationhardware.com).

## PERFECTLY PRECISE

PAGES 160-65

Interior, architectural, and terrace design by Len Morgan; [covelending.1stdibs.com](http://covelending.1stdibs.com).  
Living room: Vintage demilune consoles from Niall Smith Antiques; 212-750-3985. Pillows of Onde cotton by Fortuny (T); [fortuny.com](http://fortuny.com). George III sofa and antique parquet floor from Axel Vervoordt; [axel-vervoordt.com](http://axel-vervoordt.com). Antique armchairs from Cove Landing; [covelending.1stdibs.com](http://covelending.1stdibs.com). Regency mantel from Chesney's; [chesneys.com](http://chesneys.com).  
Kitchen: No. 8180 hardware by the Nanz Co.; [nanz.com](http://nanz.com). Bussy range by Lakanche; [lakanche.com](http://lakanche.com). Narwhal tusk from Cove Landing; [covelending.1stdibs.com](http://covelending.1stdibs.com).  
Bedroom: Unito blanket by Loro Piana (T); [loropiana.com](http://loropiana.com).  
Bath: Opus showerhead by Waterworks; [waterworks.com](http://waterworks.com).  
Terrace: Artisan Rolled Rim planters by Selbert & Rice; [selbert-rice.com](http://selbert-rice.com). Slena table by Holly Hunt (T); [hollyhunt.com](http://hollyhunt.com). Classic director's chairs by Skagerak Denmark Ltd.; [skagerak.com](http://skagerak.com). On chairs, Toppall acrylic by Ralph Lauren Home; [ralphlaurenhome.com](http://ralphlaurenhome.com).

## BLITHE SPIRIT

PAGES 166-71

Interior design by Michael Formica Inc.; [michaelformica.com](http://michaelformica.com). Strong White paint throughout by Farrow & Ball; [farrow-ball.com](http://farrow-ball.com).  
Living room: Wool rug designed by Michael Formica and custom made by V'Soske (T); [vsoske.com](http://vsoske.com). Office: EB 27 table lamp by Tecnolumen; [tecnolumen.com](http://tecnolumen.com). Ikat carpet by Calvin Klein Home; [calvinklein.com](http://calvinklein.com).  
Kitchen: Refrigerator by Sub-Zero; [subzero-wolf.com](http://subzero-wolf.com). Sistema Zeta cabinetry by Snaidero USA; [snaidero-usa.com](http://snaidero-usa.com). Dining area: Icon chairs by Philippe Starck for Emeco; [emeco.net](http://emeco.net).  
Master bedroom: Upholstered bed custom made by Charles H. Beckley Inc. (T); [chbeckley.com](http://chbeckley.com). Wooden end tables by Mrs. MacDougall (T); [donghia.com](http://donghia.com). Guest room: Rag chairs by Tejo Remy for Droog; [droog.com](http://droog.com). San Miguel blanket by Pendleton Woolen Mills; [pendleton-usa.com](http://pendleton-usa.com).  
Master bath: New Haven sink fittings by Jado; [jadousa.com](http://jadousa.com).  
Terrace: 1966 Collection lounge chairs and cocktail table by Richard Schultz; [knoll.com](http://knoll.com).

## COLONIAL REVIVAL

PAGES 172-83

Interior design, landscape design, and select furnishings throughout by Fisher Weisman; [fisherweisman.com](http://fisherweisman.com).  
Living room: Curtains of Crestwood polyester blend by Duralee (T); [duralee.com](http://duralee.com); with 31339 rayon-blend trim by Kravet (T); [kravet.com](http://kravet.com). On daybed, Pasha linen velvet by Gretchen Bellinger Inc. (T); [gretchenbellinger.com](http://gretchenbellinger.com).  
Outdoor living room: Arcadia sofa by Fisher Weisman for Michael Taylor Designs (T); [michaeltaylor designs.com](http://michaeltaylor designs.com); in Pavilion Indoor/Outdoor Vol. IV acrylic by Duralee (T); [duralee.com](http://duralee.com).  
Breakfast room: On chairs, Bird in Circle linen by Rose Cumming (T); [dessaforinnir.com](http://dessaforinnir.com).  
Kitchen: Range by Viking; [vikingrange.com](http://vikingrange.com). Dining room: Cypress table and Irish Hall chairs by Fisher Weisman for Michael Taylor Designs (T); [michaeltaylor designs.com](http://michaeltaylor designs.com). Dining terrace: Bay Klismos chairs by Michael Taylor Designs (T); [michaeltaylor designs.com](http://michaeltaylor designs.com); in Walnut Brown Tweed acrylic by Sunbrella; [sunbrella.com](http://sunbrella.com).  
Master bedroom: Shading bed linens by Frette; [frette.com](http://frette.com).  
Guest room: Curtains of Lisena cotton by Kravet (T); [kravet.com](http://kravet.com).  
Master bath: Embrayage pendant lights by Jonathan Browning Studios (T); [jonathanbrowninginc.com](http://jonathanbrowninginc.com).  
Roof terrace: Gibbings Teak sofa and chair by Michael Taylor Designs (T); [michaeltaylor designs.com](http://michaeltaylor designs.com); in Walnut Brown Tweed acrylic by Sunbrella; [sunbrella.com](http://sunbrella.com). □

ARCHITECTURAL DIGEST AND ADRIE REGISTERED TRADEMARKS

OF ADVANCE MAGAZINE PUBLISHERS INC. COPYRIGHT © 2013 CONDE

NAST. ALL RIGHTS RESERVED. PRINTED IN THE U.S.A.

VOLUME 70, NO. 4. ARCHITECTURAL DIGEST (ISSN 0093-8520) is published monthly by Condé Nast, which is a division of Advance Magazine Publishers Inc. PRINCIPAL OFFICE: Condé Nast Building, 4 Times Square, New York, NY 10036. S. I. Newhouse, Jr., Chairman; Charles H. Townsend, Chief Executive Officer; Robert A. Sauerberg, Jr., President; John W. Belando, Chief Operating Officer; Chief Financial Officer; J&J Bright, Chief Administrative Officer. Periodicals postage paid at New York, NY, and at additional mailing offices. Canada Post Publications Mail Agreement No. 406445/03. Canadian Goods and Services Tax Registration No. 123242665-RT0001. Canada Post Return Undeliverable Canadian addresses to P.O. Box 674, Station Main, Markham, ON L3P 6L4.

POSTMASTER: Send all U.S. address changes to ARCHITECTURAL DIGEST, P.O. Box 37641, Boone, IA 50037-0641. FOR SUBSCRIPTIONS, ADDRESS CHANGES, ADJUSTMENTS, OR BACK ISSUE INQUIRIES, please write to ARCHITECTURAL DIGEST, P.O. Box 37641, Boone, IA 50037-0641, call 800-365-8032, or e-mail [subscriptions@archdigest.com](mailto:subscriptions@archdigest.com). Please give both new address and old address as printed on most recent label. Subscribers: If the Post Office alerts us that your magazine is undeliverable, we have no further obligation unless we receive a corrected address within one year. If during your subscription term or up to one year after the magazine becomes undeliverable, you are ever dissatisfied with your subscription, let us know. You will receive a full refund on all unmailed issues. First copy of new subscription will be mailed within eight weeks after receipt of order. Address all editorial, business, and production correspondence to ARCHITECTURAL DIGEST, 4 Times Square, New York, NY 10036. For reprints, please e-mail [reprints@condenast.com](mailto:reprints@condenast.com) or call 717-665-9701, ext. 1001. For reuse permissions, please e-mail [permissions@condenast.com](mailto:permissions@condenast.com) or call 800-697-6000. Visit us online at [archdigest.com](http://archdigest.com).

To subscribe to other Condé Nast magazines, visit [condenastdigital.com](http://condenastdigital.com). Occasionally we make our subscriber list available to carefully screened companies that offer products and services that we believe would interest our readers. If you do not want to receive these offers and/or information, please advise us at P.O. Box 37641, Boone, IA 50037-0641 or call 800-365-8032.

ARCHITECTURAL DIGEST IS NOT RESPONSIBLE FOR THE RETURN OR LOSS OF, OR FOR DAMAGE OR ANY OTHER INJURY TO, UNSOLICITED MANUSCRIPTS, UNSOLICITED ARTWORK (INCLUDING, BUT NOT LIMITED TO, DRAWINGS, PHOTOGRAPHS, AND TRANSPARENCIES), OR ANY OTHER UNSOLICITED MATERIALS. THOSE SUBMITTING MANUSCRIPTS, PHOTOGRAPHS, ARTWORK, OR OTHER MATERIALS FOR CONSIDERATION SHOULD NOT SEND ORIGINALS UNLESS SPECIFICALLY REQUESTED TO DO SO BY ARCHITECTURAL DIGEST IN WRITING. MANUSCRIPTS, PHOTOGRAPHS, AND OTHER MATERIALS SUBMITTED WILL NOT BE RETURNED.